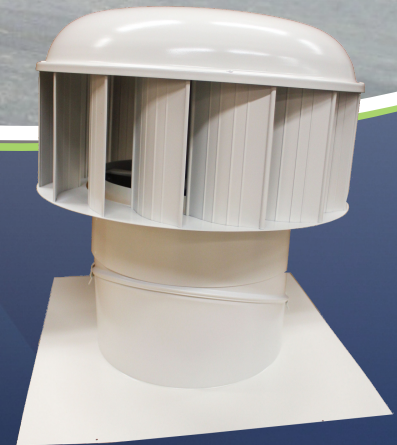


Ecopower® TURBINES

Industrial Wind or Power Driven Turbine Ventilation



ecopower® utilizes an electronic commutating (EC) motor installed in the head of the ventilator to enable motorized boost during periods of low wind speed or special ventilation needs. The bearing system of the motor becomes the bearing system of the ventilator. This means that the vent can be free spinning under wind load or power activated as conditions require.

ecopower® is available in three sizes, 400 mm (15.7 in), 600 mm (23.6 in) and 900 mm (35.4 in) throat sizes to fit most applications.



Ecopower® TURBINES

Industrial Wind or Power Driven Turbine Ventilation

Create A Healthier
Indoor Environment

ecopower® Benefits

- Optional powered ventilation without reducing the performance of wind exhaust levels (which occurs when motor and fan blades are installed in the throat)
- High levels of energy efficiency
- Lower operational noise levels when compared with similar capacity axial fan products
- Dependable ventilation that performs when required
- CSR Edmonds' vertical vane vent technology, which outperforms traditional spherical shape metal vents of the same throat diameter. Based on Flow Coefficient Tests performed under AS4740:2000 by CSR Edmonds
- Lighter weight than comparable axial fans
- Single phase (EP400 & EP600) and low voltage (EP100 & EP150) power, allows simpler electrical installation

| ecopower® Model | Input Voltage | Max Running Power Consumption | Weight of Head | Noise dBA@3 m(10 ft) | Flow Rate (@ $\Delta p=0$) |
|-----------------|------------------------|-------------------------------|---------------------|----------------------|---------------------------------------|
| H400 | 200-277 VAC 50/60Hz | 68 W | 7.6 kg 16.8 lbs | 46 | 2400 m ³ /hr 1413 CFM |
| H600 | 200-277 VAC 50/60Hz | 116 W | 14.4 kg 31.7 lbs | 49 | 4280 m ³ /hr 2519 CFM |
| H900 | 200-277 VAC 50/60Hz | 260 W | 30.0 kg 66.1 lbs | 45.5 | 10,000 m ³ /hr 5886 CFM |



3780 Quail Rd. NE Sauk Rapids, MN 56379
1-320-253-7068
1-800-669-4038